

The Syntech Spectras GC855 model 118 methane and THC analyser

The Syntech Spectras GC855 series 100 model 118 methane and THC analyser is built for the analysis of methane and the sum of all other hydrocarbons (including methane) in air (THC). The separation works without scrubbers. It is a chromatographic principle.

The instrument is designed for fast emission control, the cycle time is less than one minute. Coupled with a good sample conditioning system it is a new alternative for emission control, where at the moment methane gets more attention with a view to its role a greenhouse gas. At the same time the ozone problematic leads to regulations concerning total VOC emissions.



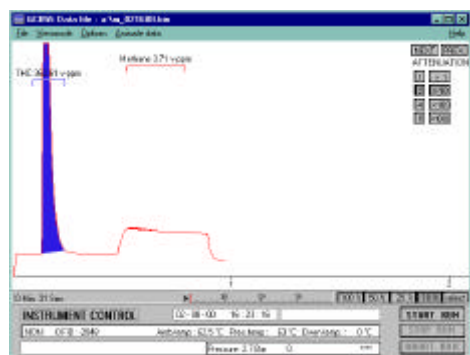
The gas is sampled in two loops at the same time. After injection the sample from one loop passes directly without separation into the detector.

The sample from the second loop inject into a cooled column. The methane passes into the detector. A short time after this, the column will be heated and all the NMHC-compounds are back flushed. This results in two peaks generated by the FID: a THC and a methane-peak. The cycle time is less than one minute.

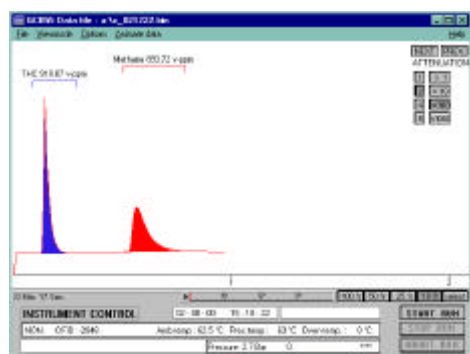
In the instrument we use a standard industrial PC running under Windows. This means that the whole PC structure is used to handle also the results of measurements: data are interpreted and saved on the internal hard disk. Data can also be transferred by network and modem connection. The results are calculated as partial pressure. The system can be coupled to a stream selector and alarms can be set at different levels.

Simple operation, good reliability, low maintenance cost is important for us.

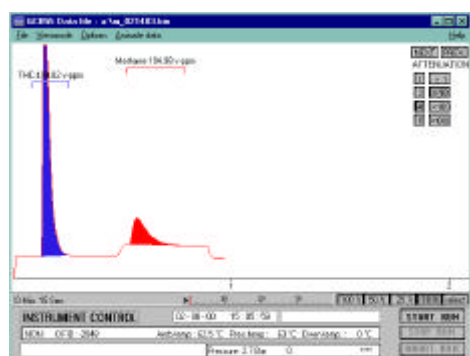
With a network of distributors in and outside of Europe you can be sure that your instrument comes with an appropriate training and that support is available to help you with problems.



120 ppm propane (360 ppm as methane)



900 ppm methane



130 ppm propane (400 ppm as methane) and 100 ppm methane

Methane and THC Model 118	Detector: FID. Levels: 0.1 ppm for methane THC with cooled packed column. Range up to 1%. <i>Included items: Series 100 , FID detector, cycle time 1 min</i>
consumption of gas	instrument air and carrier: dry, clean and hydrocarbon free air, 3 bar, 300 ml/min hydrogen, quality 5.0 at 20 ml/min
dimensions	19" rack, 5 standard Height Units, depth 37.2 cm net
power demand	220 V AC, 250 VA
included hardware	computer 80486 DX4 100 16Mb, hard disk >3 Gb, 2.5 ", floppy disk 1.4 Mb, 3.5", display LCD 9.5 " monochrome, I/O 2 x RS232, 1 parallel-port
included software	Dos and Windows 3.11, control of instrument: direct control via keyboard or mouse, or via remote host (RS232 / modem), data exchange protocols available on demand